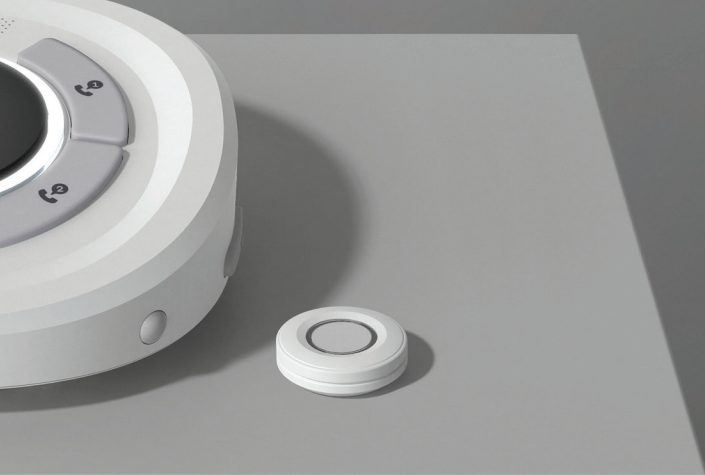


# Care Button Setup

Aloe Care



## Meet Your New Care Button

The Care Button is an accessory device that extends the Smart System's reach to other areas of the home and property. When pressed, the button pings the system and notifies caregivers to reach out to independent adults.

—

The Care Button functions as an alert beacon and does not have a speaker or microphone.



1

## Activate It

For the Care Button to work with the Smart System, it first needs to be activated by an Aloe Care team member.

**TIP** Have the Care Button box handy for the call—you will need to reference a number on it for activation.

1-888-ALOE CARE  
(1-888-256-3772)



3

## Wear It

Snap it into the lanyard to wear it like a necklace, or into the wristband to wear it like a watch.

4

## Notify Caregivers

Press the button to notify caregivers that you need to get ahold of them. When pressed, the button's ring light turns green.

Aloe Care Health, Inc.  
Copyright © 2020 Aloe Care Health